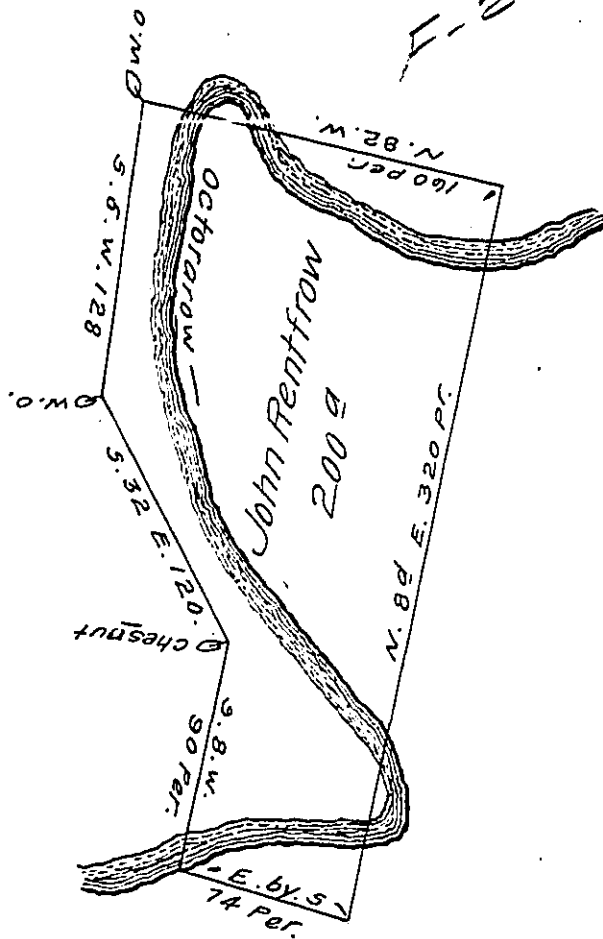


FORM No. 1.

B-1-139

F-221



Begining at a Corner Marked White Oak standing on a Barren Hill on ye West side of Octorarow Creek, thence South 5 deg. West-erly by a line of Marked Trees 128 per. to Another White Oak, thence South 32 Degrees Easterly 120 per. to a Chesnut Tree, thence S. 8. W. 90 per. to a post, thence E. by S. 74 perches to a post, thence N. 8° E. 320 perches to a post, thence N. 82° Westerly 160 perches to ye place of begining. Containing 200 acres with ye usual Allowance of 6. P. C.

The ^{above} 200 Acres are part of 2500 Acres

Granted by the Comm^rs Warr^{ts} of ye th 15. 7th 1714.

Surveyd 9th ye 9th 1719.

to Mich^l ^{Harlan} to whom it ^{ought} to be said Surveyd.

p^r Isaac Taylor. —

IN TESTIMONY that the above is a copy of the original remaining on file in the Department of Internal Affairs of Pennsylvania, made conformably to an Act of Assembly approved the 16th day of February, 1833, I have hereunto set my Hand and caused the Seal of said Department to be affixed at Harrisburg, this twelfth day of April 1910.

Henry Horack
Secretary of Internal Affairs.